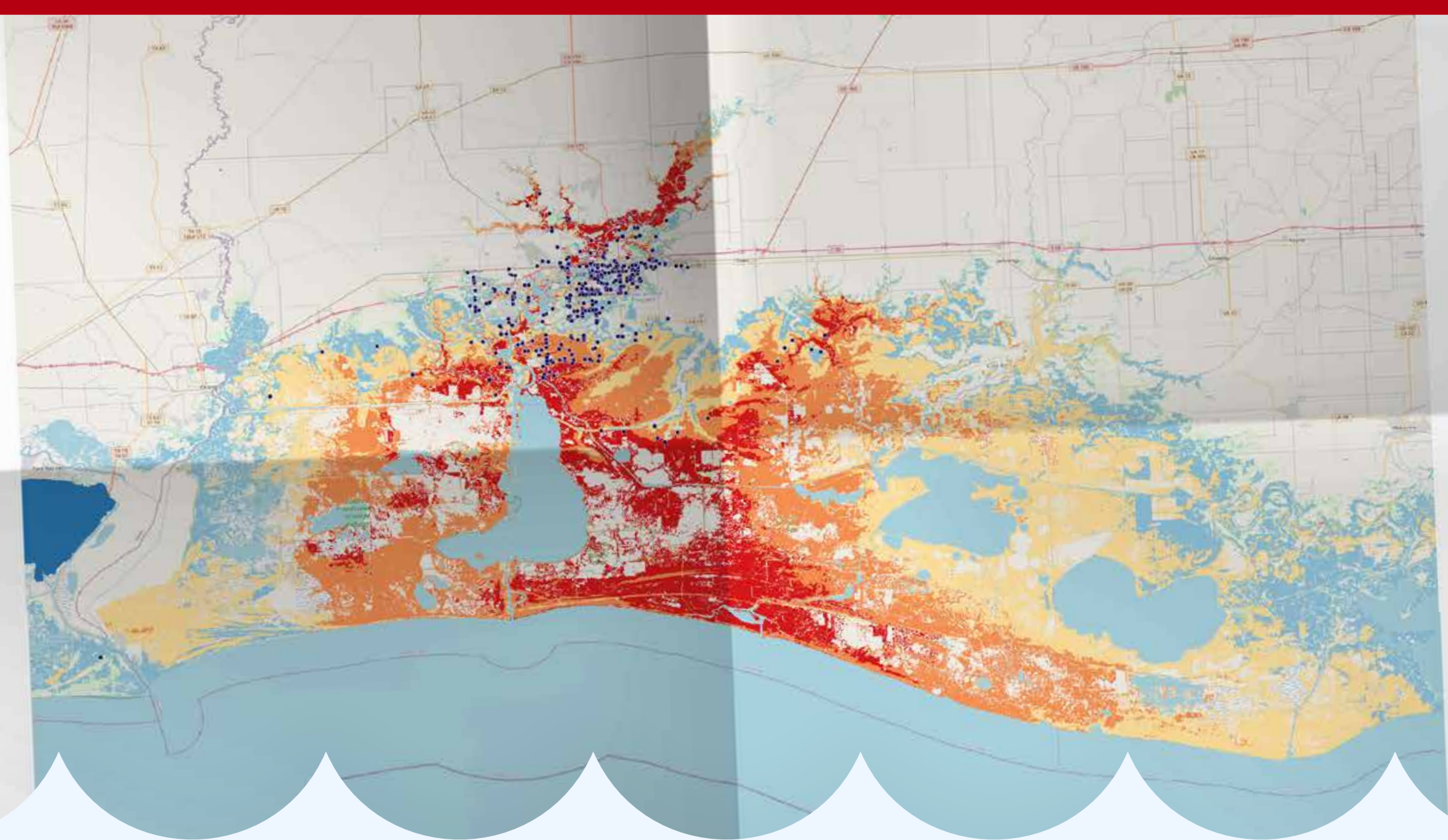


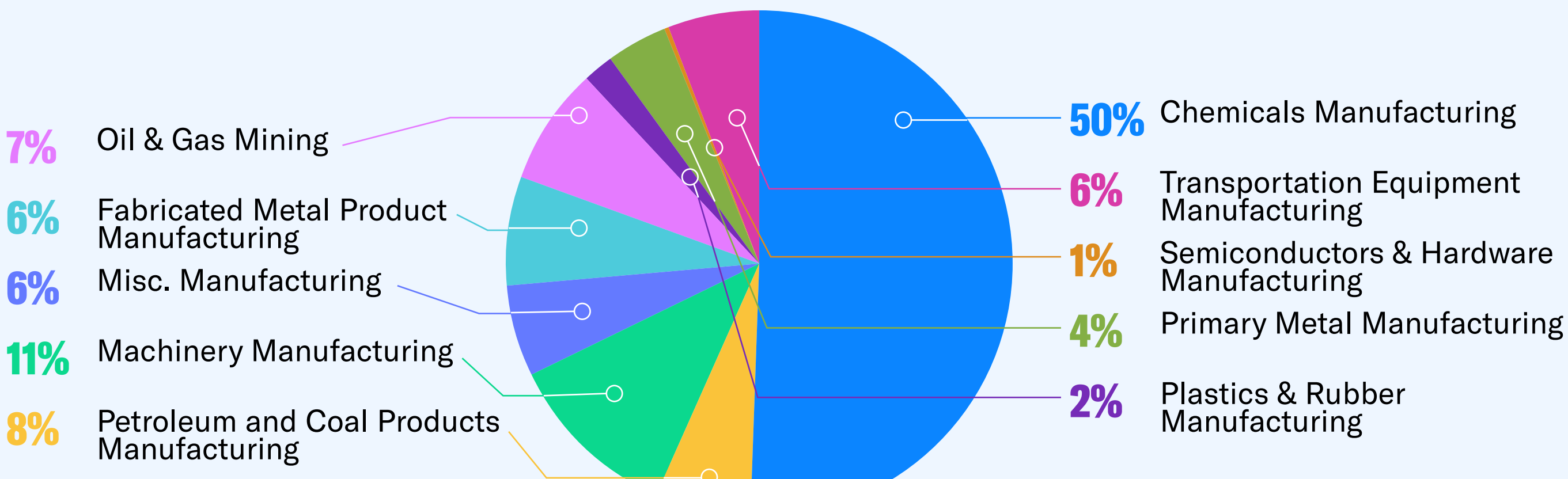
HURRICANE LAURA



Properties At Risk Across Oil & Gas, Manufacturing, Transportation & Warehousing Services & Others

- 16 Properties at risk Greater than 1 foot above ground
- 103 Properties at risk Greater than 3 feet above ground
- 163 Properties at risk Greater than 6 feet above ground
- 410 Properties at risk Greater than 9 feet above ground

Impact by Major Industry Type



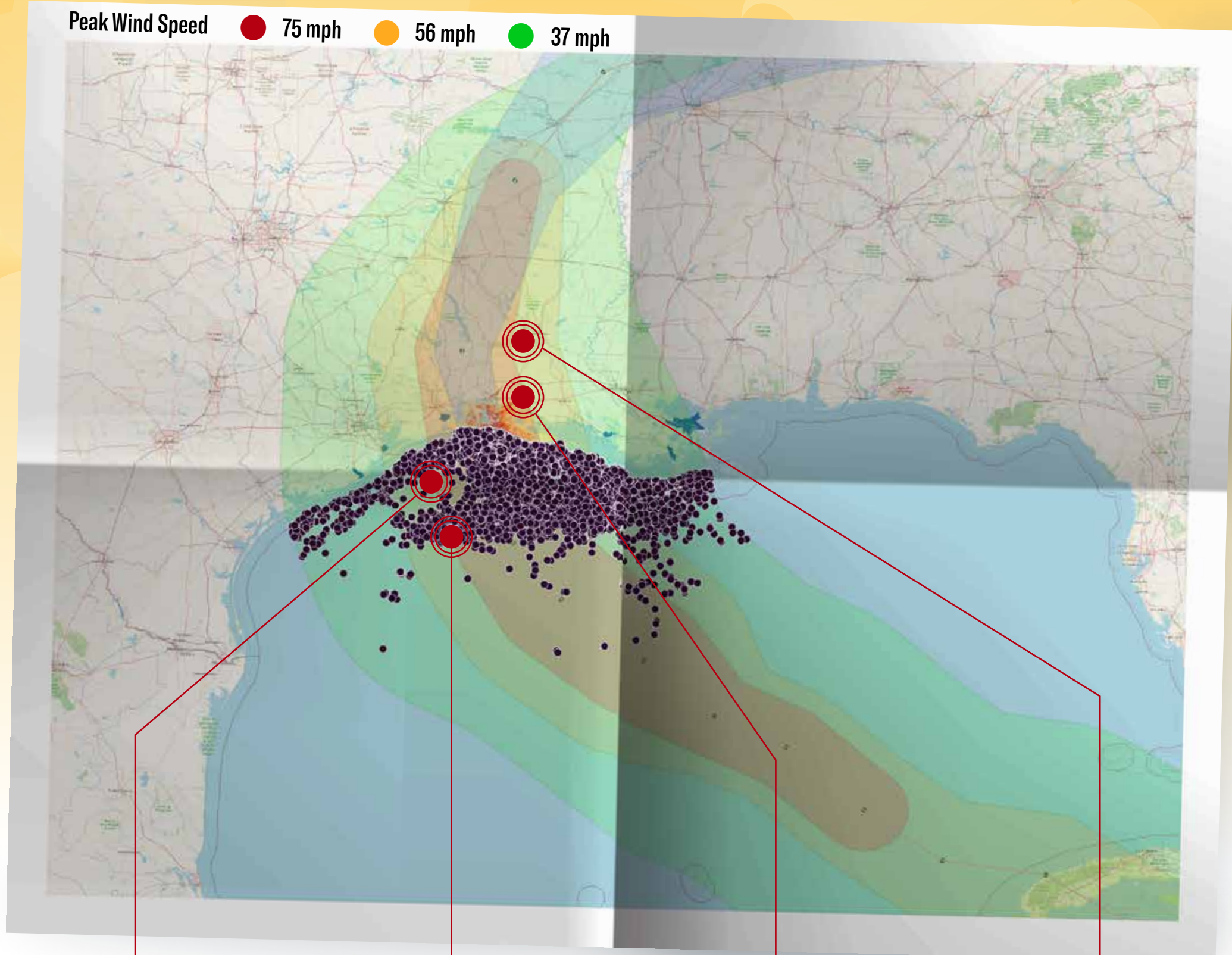
Energy Industry Impact

OIL & GAS ENTITIES IN THE RED ZONE

Petroleum and Coal Products Manufacturing	43
Oil & Gas Mining	3
Petroleum Refineries	10
Oil Refineries	13

POWER ENTITIES IN THE RED ZONE

Electrical substations	93
Active transmission lines	550
Transmission towers	4,373



Fieldwood

97 offshore fixed platforms in red zone + 6 gas wells in orange zone.

Cox Operating

37 offshore fixed platforms in red zone.

ExxonMobil

1 petroleum and 3 ethylene manufacturing/refining facilities in red zone, 14 oil wells & 1 gas well in orange zone.

BASF

2 ethylene facilities in red zone

Top Impacted Companies

17

Crude Oil Pipelines in Red zone

→ Crude Oil Pipelines in Orange Zone: 5
→ Crude Oil Pipelines in Green Zone: 35

8

HGL Pipelines in Red zone

→ HGL Pipelines in Orange Zone: 17
→ HGL Pipelines in Green Zone: 15

99

Ethylene Processing Plants in Red zone

333

Active offshore platforms in Red zone

5.7K Bbls & 39K Mcf

Daily oil & gas production impacted from offshore platforms in Red & Orange zones

Offshore Platforms at Risk

Company	Fixed Offshore Platforms
Fieldwood Energy LLC	238
Cox Operating, L.L.C.	102
Arena Offshore, LP	39
Sanare Energy Partners	17
Talos	19



Adapt Ready's groundbreaking risk intelligence software platform is designed for commercial (re)insurers, brokers & corporate clients. Our patent-pending technology optimizes external data and delivers insights that enable our clients to better manage risk and enhance their growth and profitability.

HURRICANE LAURA

Petroleum Refineries in red zone - 14

Company	Corp	Site	State	Mbpd
Calcasieu Refining Co	Transworld Oil Usa Inc	Lake Charles	Louisiana	129.5
Calumet Princeton Refining Llc	Calumet Specialty Products Partners, L.p.	Princeton	Louisiana	8.7
Exxonmobil Refining & Supply Co	Exxon Mobil Corp	Beaumont	Texas	384.4
Total Petrochemicals & Refining Usa	Total Sa	Port Arthur	Texas	245
Premcor Refining Group Inc	Valero Energy Corp	Port Arthur	Texas	415
Citgo Petroleum Corp	Pdv America Inc	Lake Charles	Louisiana	440
Calumet Shreveport Refining Llc	Calumet Specialty Products Partners, L.p.	Shreveport	Louisiana	60
Phillips 66 Company	Phillips 66 Company	Westlake	Louisiana	273
Motiva Enterprises Llc	Saudi Aramco	Port Arthur	Texas	639.7
Lion Oil Co	Delek Group Ltd	El Dorado	Arkansas	85

- **Impact of 2.7 million barrels per day refining capacity**
- **Petroleum Refineries in Orange Zone: 1**
- **Petroleum Refineries in Green Zone: 23**

Gas Refineries in Red zone - 20

Plant Name	Owner Cum Operator	City	State
Barracuda Gas Plant	Targa Resources	Cameron	LA
Big Lake Gas Plant	Targa Midstream Services LLC	Lake Charles	LA
Brookeland Plant	ETC Field Services LLC	Brookeland	TX
Capiana Plant	Enable Midstream Partners	Shreveport	Capiana Plant
Cotton Valley Gas Plant	XTO Energy, Inc.	Cotton Valley	Cotton Valley Gas Plant
Dorcheat Gas Processing Plant	Bonanza Creek Energy, Inc.	Magnolia	AR
Dubach Gas Plant	ETC Field Services LLC	Dubach	Dubach Gas Plant
Dubberly Plant	ETC Field Services LLC	Dubberly	LA
Elm Grove Plant	ETC Field Services LLC	Haughton	LA
Gillis Gas Plant	Targa Field Services LLC	Lake Charles	LA

- **Gas Refineries in Orange Zone: 13**
- **Gas Refineries in Green Zone: 36**



Adapt Ready's groundbreaking risk intelligence software platform is designed for commercial (re)insurers, brokers & corporate clients. Our patent-pending technology optimizes external data and delivers insights that enable our clients to better manage risk and enhance their growth and profitability.